

# C2PC Training Brief



C2PC Operational Users Conference  
2-6 FEB 2004

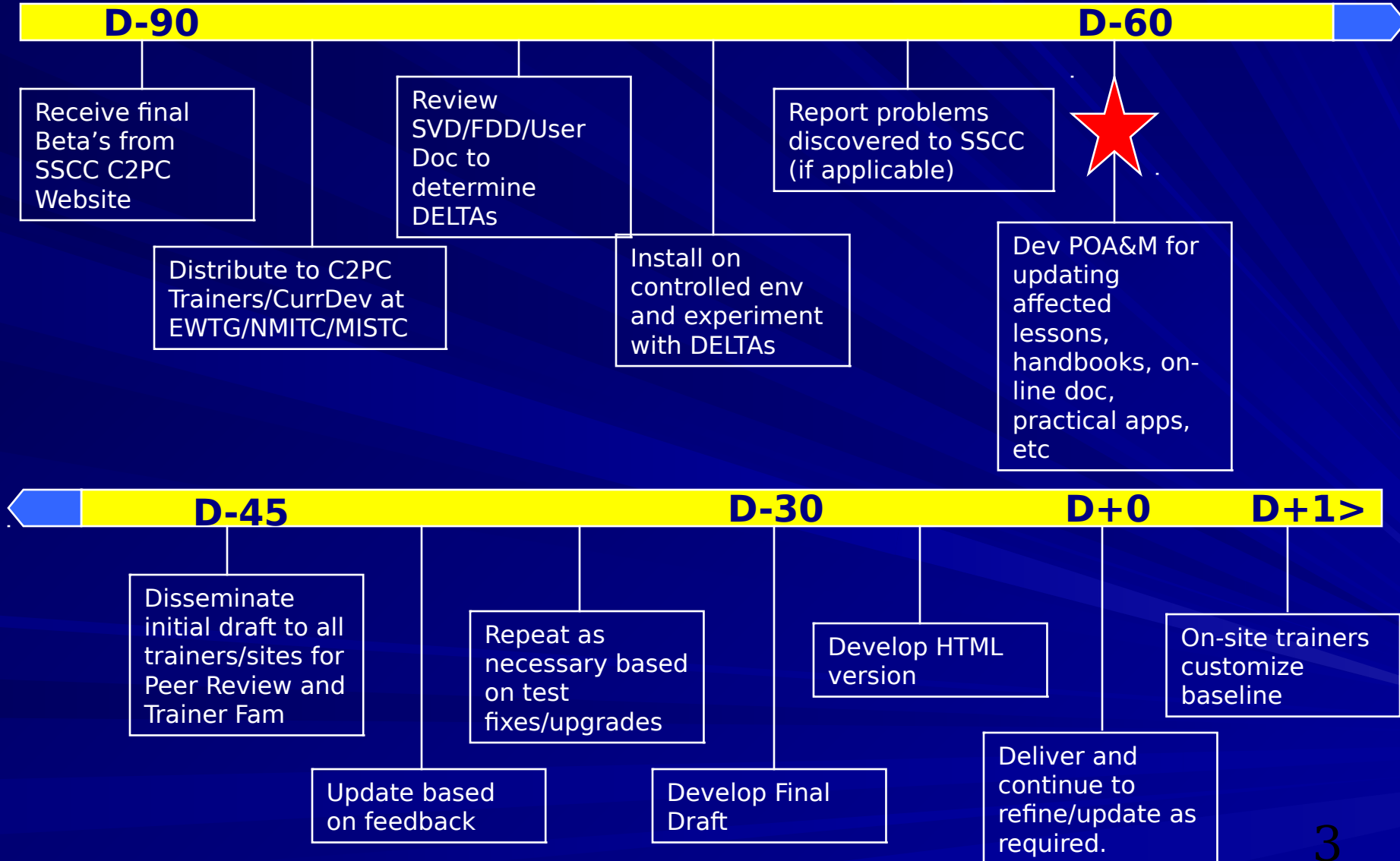
CB Brown  
[cb.brown@titan.com](mailto:cb.brown@titan.com)  
(757) 671-2554

# Purpose/Agenda

- Purpose: Provide information about C2PC Training
- Agenda
  - Training Materials Development Process
  - Where is C2PC trained?
  - What is trained?
  - Training Concerns/Issues
  - Other training resources
  - Potential training initiatives

Training is a system KPP!

# C2PC Training Materials Development Process



# Where is C2PC being taught?

- EWTGLant/Pac

- Unit Ops Specialist/Ground Ops Chief/MEU Staff Planning Courses

- NMITC

- IAS Operator Course

- MAGTF Intel Courses

- MSTP MEFEX Prep/MCU

- I, II and II MEF MISTC's

- EWS

- SOI East in new Ground Ops Chief course

- MTT's

- MSBL Refresher, MFE, GTMO

More than 1500 students trained in FY03

# What is being trained?

## ■ 80-20-80 (80% users use 20% functionality 80% of the time)

- Operational Architecture and systems overview
- C2PC touchpoints and dependencies
- Tactical Display (mapping and symbology)
- Tracks
- Overlays
- Routes
- Track Management (TMS, Gateways, Filters, etc)

## ■ Not just C2PC

- IOW
- Basic computer operations
- Microsoft Office
- IO-MC, EMT, MOE, TBM

## ■ Combine buttonology with functionality

- Overlays = COA Dev
- DSTB = IPB/MCOO
- Trackplot = SA

80-90% Hands-on - re-enforced with PA/PE's - Brilliance in Basics

MCCRE MISSION PERFORMANCE STANDARDS.doc - Microsoft Word

File Edit View Insert Format Tools Table Window Help Acrobat

Type a question for help

100%

RG7/BN MCCRES MISSION PERFORMANCE STANDARDS TO BE EVALUATED

MPS EVENTS

2A.2 INTELLIGENCE

2A.2.1 DIRECT THE INTELLIGENCE EFFORT

2A.2.1 PLAN INTELLIGENCE COLLECTION

2A.2.3 PROCESS AND DISSEMINATE INTELLIGENCE INFORMATION

**(Proposed MAGTF C4I Tasks)**

2A.2.x ESTABLISH, MAINTAIN AND DISSEMINATE THE ENEMY SITUATION IN C2PC AND INTEL OFFICE

2A.2.x DEVELOP AND DISSEMINATE IPB PRODUCTS USING C2PC DSTB

2A.2.x DEVELOP AND DISSEMINATE R&S PLAN USING C2PC OVERLAYS

2A.2.x DEVELOP A COLLECTION WORKSHEET USING IOW APPLICATIONS

2A.2.x DEVELOP AND DISSEMINATE AUTOMATED TARGETING CARDS/FOLDERS USING JTT

2A.2.x USE C2PC TO SUPPORT COA ANALYSIS AND PREPARE LOG ESTIMATE OF SUPPORTABILITY

2A.2.x

2A.4 COMMUNICATIONS

2A.4.3 PLAN COMMUNICATIONS SECURITY

2A.4.4 ENSURE INTEROPERABILITY

2A.4.5 CONDUCT COMMUNICATIONS PREPARATION

2A.4.7 CONDUCT COMMUNICATIONS CONTROL

**(Proposed MAGTF C4I Tasks)**

2A.4.x PLAN AND CONFIGURE BN C4I NETWORK USING DACT, EPLRS, SINGCARS, ETC

2A.4.x ESTABLISH AND MAINTAIN DATA COMMUNICATION WITH HIGHER HQ

2A.4.x DEVELOP HAS (HIGHER, ADJACENT AND SUBORDINATE) DIGITAL INFORMATION FLOW PLAN

2A.4.x USE C2PC TO SUPPORT COA ANALYSIS AND PREPARE COMM ESTIMATE OF SUPPORTABILITY

2A.4.x ANALYZE TERRAIN USING C2PC DSTB TO DETERMINE LOS AND TERRAIN MASKING

2A.4.x DEVELOP AND MONITOR THE INFO ASSURANCE/PROTECT PLAN/ACTIONS

2A.4.x SANITIZE C4I SYSTEMS/COC IN PREPARATION FOR A VACATED COMMAND POST INSPECTION

2A.5 LOGISTICS

2A.5.1 CONDUCT LOGISTICS PLANNING

2A.5.2 PROVIDE LOGISTICS SUPPORT

2A.5.3 OPERATE A BATTALION AID STATION

Page 1 Sec 1 1/3 At 2.9" Ln 14 Col 58 REC TRK EXT OVR



# Training Issues and Concerns

- Time for training
  - Feature rich and continually being enhanced
- What to train
  - Forces trade-offs in both formal school and unit training
- Supporting Systems not avail
  - IOS v1, v2, AFATDS, M-DACT, EPLRS, TBM accounts, etc.
- Limited Doctrine, CONOPS and TTP
  - System based METL/T&Rs
  - Unit employment standards and criteria
- Extremely diverse training attendance
- Limited attendance by leadership
- “Combined Systems” training is complex and units continue to request basic, single-system training
- Desktops vs IOWs – software builds/system resources

# Additional Training Resources

- <https://tacmobile.spawar.navy.mil/c2pc>
- EWTG, NMITC and MSTP websites
- IOW Familiarization CBT
- IOW Handbook
- IOW-based on-line SAM/SUM  
Documentation contains both MS Word lesson plans, HTML lessons, C2PC User's Manual as well as C2PC is embedded in 15 tasks and 86 functions (separate brief avail if requested)
- Others?



# On-the-system XML-based SAM/SUM

User Profile...Please Enter Your Requirements - Microsoft Internet Explorer

Please enter the following information.

Echelon:

UserType:

System:



MSBL 3.6 Operator Documentation - Microsoft Internet Ex...

## MSBL 3.6 Operator Documentation

AFATDS AND EMT COMPATIBILITY
<a href="#">C2PC 5.9.0.3 TRAINING CURRICULUM (HTML VERSION)</a>
<a href="#">C2PC 5.9.0.3 TRAINING CURRICULUM (WORD VERSION)</a>
<a href="#">C2PC 5.9.0.3 USER'S GUIDE</a>
<a href="#">C2PC MOE V2 OVERVIEW</a>
<a href="#">C2PC MOE V2 SOFTWARE USERS MANUAL</a>
<a href="#">C2PC MOE V1 TRAINING CURRICULUM</a>
<a href="#">DSTB 3.0 USER'S MANUAL</a>
<a href="#">DSTB TRAINING CURRICULUM (HTML VERSION)</a>
<a href="#">DSTB TRAINING CURRICULUM (WORD VERSION)</a>
<a href="#">EMT USERS MANUAL</a>
<a href="#">EMT USERS MANUAL FOR C2PC</a>
<a href="#">IMOM SYSTEM USER'S MANUAL</a>
<a href="#">INTEL OFFICE SOFTWARE USERS MANUAL</a>
<a href="#">INTEL OFFICE TRAINING CURRICULUM (HTML VERSION)</a>
<a href="#">INTEL OFFICE TRAINING CURRICULUM (WORD VERSION)</a>
<a href="#">IOW 3.6 USERS HANDBOOK</a>
<a href="#">IOW 3.6 SOFTWARE USERS MANUAL</a>
<a href="#">NBC ANALYSIS USERS HANDBOOK</a>
<a href="#">SMART_BOARD SOFTWARE USERS GUIDE</a>
<a href="#">VMF INJECTOR TRAINING CURRICULUM</a>

IOW Client - SAM/SUM Documentation (Echelon: BN/SQDN, User Type: Operator, System: IOWClient) - Microsoft Internet Explorer




Address: file:///C:/Program%20Files/IOW\_DOCS/expFrameSet.htm?echelon=5&usertype=1&system=5

**IOW Client**

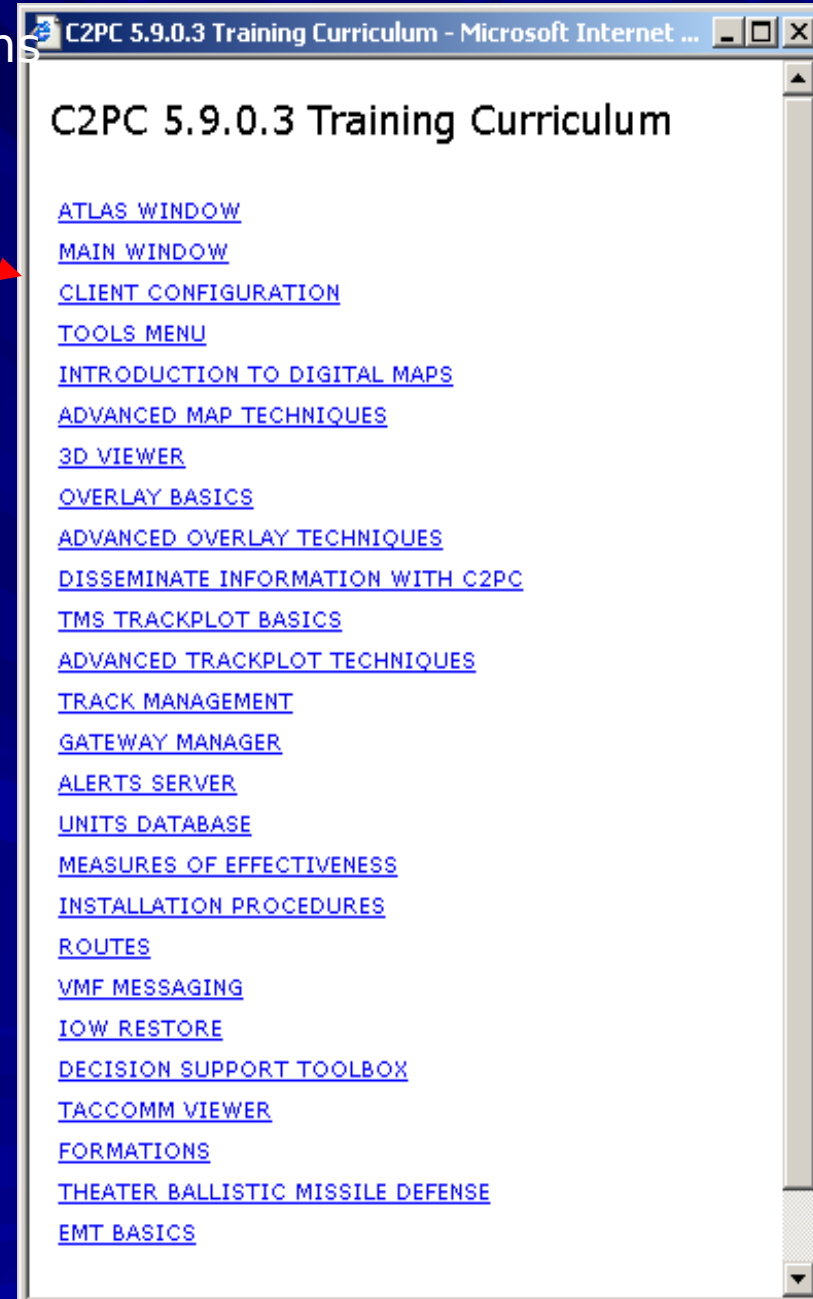
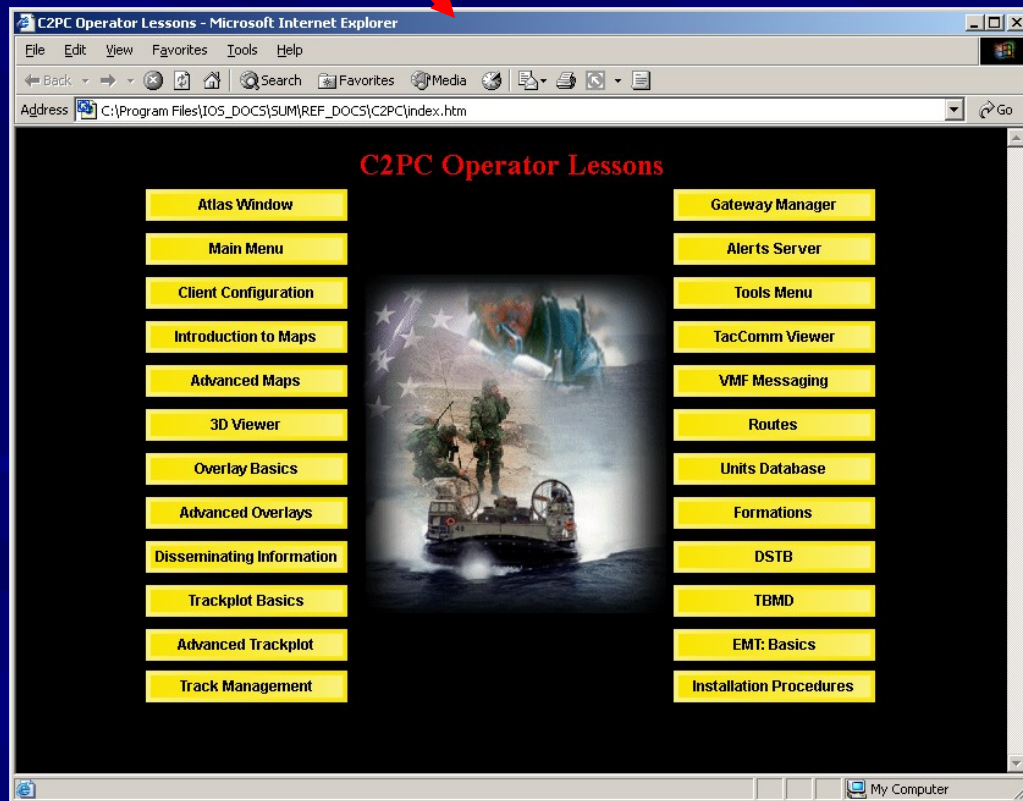
### Task/Function List

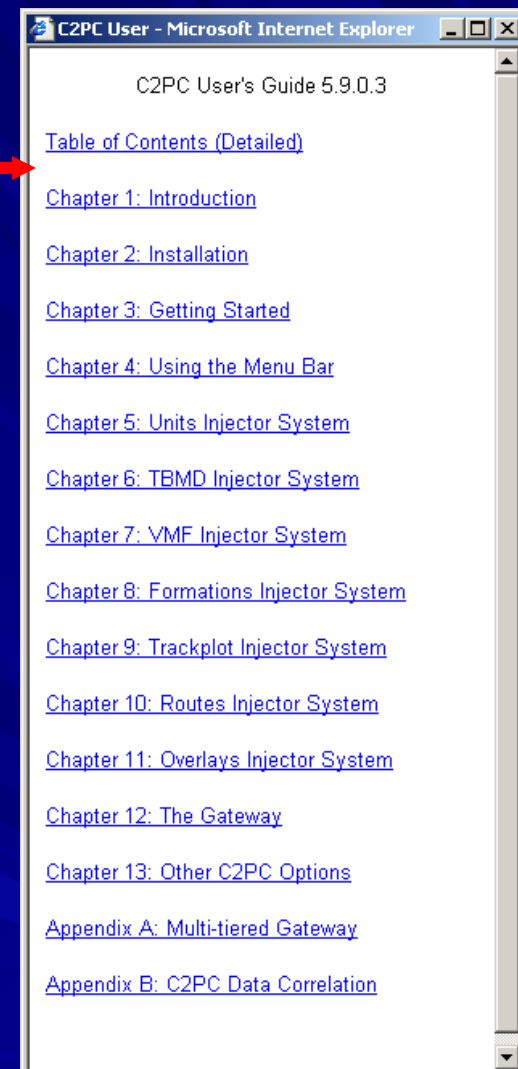
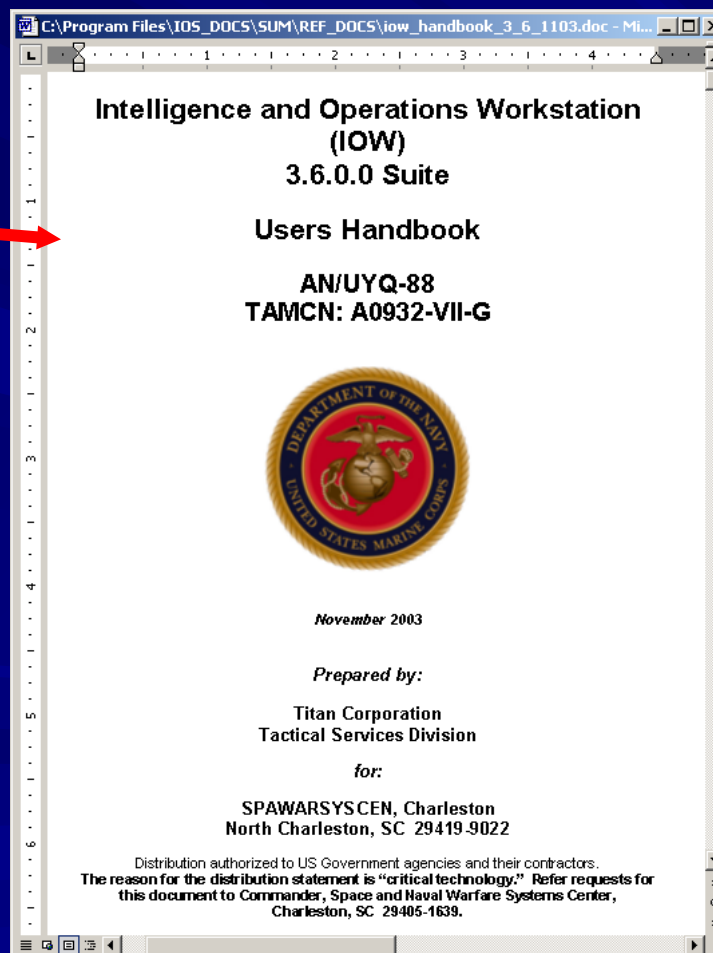
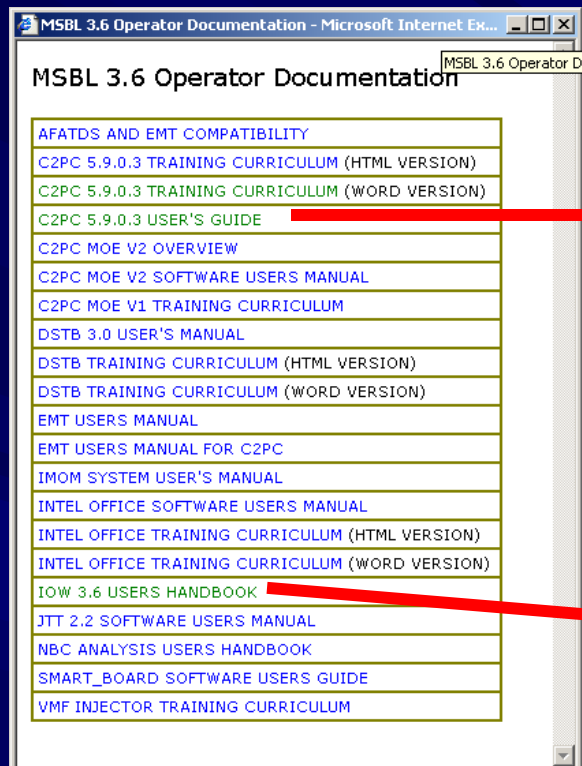
- ☐ AFATDS/EMT COMMUNICATION SETTINGS
- ☐ CATEGORIZE TERRAIN
- ☐ CONDUCT BATTLE DAMAGE ASSESSMENT (BDA)
- ☐ CONDUCT INTELLIGENCE UPDATES WITH INTEL OFFICE
- ☐ CONDUCT MAP RECONNAISSANCE

### Daily Seven

-  [CHECK SYSTEM STATUS](#)
-  [ASSUME THE WATCH](#)
-  [PROCESS C4I](#)

# HTML and MS Word based C2PC Lesson Plans





# Potential Training Initiatives

- DL/CBT/WBT – What are the requirements?
- Marine Corps University – College of Continuing Education non-resident EWS
- Addition to USMC General Knowledge Guide?
- Intermediate and Advanced C2PC Training?
- Added to TBS, SNCO-A, SOI, others?

**What do you  
need/recommend?**

questions?